



LUND UNIVERSITY
Faculty of Medicine

Invitation for the workshop

IMPLEMENTATION OF V/P SPECT
ACCORDING TO EUROPEAN GUIDELINES
IN LUND, SWEDEN



Date: 2015-01-21 – 2015-01-23

The Workshop is granted by 11 European CME credits (ECMEC) by the European Accreditation Council for Continuing Medical Education (EACCME).

Location: Skåne University Hospital in Lund, Sweden

Course management: Assoc. Professor Marika Bajc, marika.bajc@med.lu.se

Contact persons: Teacher Kerstin Brauer, kerstin.brauer@med.lu.se

Department of Clinical Physiology, Skåne University Hospital,
S-221 85 LUND, Sweden, fax number + 46 46 15 17 69

Program:

Day 1

Lectures

- Pulmonary embolism and clinical probability
- Performance and validation of V/P SPECT
- Multislice CT and diagnostics of pulmonary embolism
- How to use Technegas

Day 2

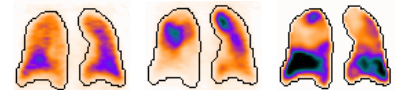
Lectures and exercises

- Clinical implementation of V/P SPECT in cardio-pulmonary diseases
- Hybrid V/P SPECT CT
- Interpretation according to the European Guidelines
 - Interactive session
 - Clinical procedure of the patients with suspected pulmonary embolism following the whole clinical protocol
 - Interpretation of V/P SPECT, finishing with writing the report

Day 3

Lectures and discussion

- Algorithm for diagnosis of pulmonary embolism
- Alternative diagnoses
- The possible role of hybrid V/P SPECT/CT
- Difficult cases, demonstration and discussion
- General discussion



Number of participants: 10 – 15

Teachers: Marika Bajc; Massimo Miniati, Professor Florence; Björn Jonson, Professor Lund; Ralf Bauer, MD Frankfurt; Björn Altmann, General Manager, Cyclomedica Germany

Target group: Physicians, biomedical technicians, medical physicists
Different occupational categories are very welcome from the same hospital.

Accommodation: List of hotels will be sent in another file after registration.

Other: The course starts at noon on Wednesday, 21st January and ends on Friday, 23rd January, at 12:30 pm with optional extension for the afternoon. Evening activities on Wednesday and Thursday are included.

Fee: 600 Euro (excluding VAT) incl. lunch, coffee and evening activities. The course fee will be invoiced after notification.

Notification: Registration form and course invitation is found at:
http://www.med.lu.se/klinvetlund/klinisk_fysiologi/kurser

The course is organized in collaboration between the University of Lund, Skåne University Hospital and the Swedish Association of Nuclear Medicine.